

American Funds®  
Global Insight Fund

Summary prospectus  
January 1, 2024



CAPITAL  
GROUP® | AMERICAN  
FUNDS®

Class	A	C	T	F-1	F-2	F-3	529-A	529-C	529-E	529-T	529-F-1
	AGVFX	AGVDX	AGVTX	AGVEX	AGVGX	AGVHX	CGVYX	CGVBX	CGVEX	CGVTX	CGVFX
Class	529-F-2	529-F-3	R-1	R-2	R-2E	R-3	R-4	R-5E	R-5	R-6	
	CGVGX	CGVHX	RGLAX	RGLBX	RGLHX	RGLDX	RGLGX	RGLJX	RGLFX	RGLGX	

Before you invest, you may want to review the fund's [prospectus](#) and [statement of additional information](#), which contain more information about the fund and its risks. You can find the fund's prospectus, statement of additional information, reports to shareholders and other information about the fund online at [capitalgroup.com/prospectus](https://capitalgroup.com/prospectus). You can also get this information at no cost by calling (800) 421-4225 or by sending an email request to [prospectus@americanfunds.com](mailto:prospectus@americanfunds.com). The current prospectus and statement of additional information, dated January 1, 2024, are incorporated by reference into this summary prospectus.

**Investment objective** The fund's investment objective is to provide prudent growth of capital and conservation of principal.

**Fees and expenses of the fund** This table describes the fees and expenses that you may pay if you buy, hold and sell shares of the fund. **You may pay other fees, such as brokerage commissions and other fees to financial intermediaries, which are not reflected in the tables and examples below.** For example, in addition to the fees and expenses described below, you may also be required to pay brokerage commissions on purchases and sales of Class F-2, F-3, 529-F-2 or 529-F-3 shares of the fund. You may qualify for sales charge discounts if you and your family invest, or agree to invest in the future, at least \$25,000 in American Funds. More information about these and other discounts is available from your financial professional, in the "Sales charge reductions and waivers" sections on page 34 of the prospectus and on page 71 of the fund's statement of additional information, and in the sales charge waiver appendix to the prospectus.

**Shareholder fees** (fees paid directly from your investment)

	Share class:					All F and 529-F share classes	All R share classes
	A	529-A	C and 529-C	529-E	T and 529-T		
Maximum sales charge (load) imposed on purchases (as a percentage of offering price)	5.75%	3.50%	none	none	2.50%	none	none
Maximum deferred sales charge (load) (as a percentage of the amount redeemed)	1.00 <sup>1</sup>	1.00 <sup>1</sup>	1.00%	none	none	none	none
Maximum sales charge (load) imposed on reinvested dividends	none	none	none	none	none	none	none
Redemption or exchange fees	none	none	none	none	none	none	none

**Annual fund operating expenses** (expenses that you pay each year as a percentage of the value of your investment)

	Share class:	A	C	T	F-1	F-2	F-3	529-A
Management fees		0.41%	0.41%	0.41%	0.41%	0.41%	0.41%	0.41%
Distribution and/or service (12b-1) fees		0.30	1.00	0.25	0.25	none	none	0.20
Other expenses		0.16	0.16	0.16 <sup>2</sup>	0.16	0.15	0.05	0.21
Total annual fund operating expenses		0.87	1.57	0.82	0.82	0.56	0.46	0.82

	Share class:	529-C	529-E	529-T	529-F-1	529-F-2	529-F-3	R-1
Management fees		0.41%	0.41%	0.41%	0.41%	0.41%	0.41%	0.41%
Distribution and/or service (12b-1) fees		1.00	0.50	0.25	0.25	none	none	1.00
Other expenses		0.21	0.18	0.21 <sup>2</sup>	0.23	0.18	0.11	0.13
Total annual fund operating expenses		1.62	1.09	0.87	0.89	0.59	0.52	1.54

	Share class:	R-2	R-2E	R-3	R-4	R-5E	R-5	R-6
Management fees		0.41%	0.41%	0.41%	0.41%	0.41%	0.41%	0.41%
Distribution and/or service (12b-1) fees		0.73	0.60	0.50	0.25	none	none	none
Other expenses		0.34 <sup>2</sup>	0.24	0.20 <sup>2</sup>	0.15	0.28	0.09	0.05
Total annual fund operating expenses		1.48	1.25	1.11	0.81	0.69	0.50	0.46
Fee waiver		–	–	0.05 <sup>3</sup>	–	0.08 <sup>3</sup>	–	–
Total annual fund operating expenses after fee waiver		1.48	1.25	1.06	0.81	0.61	0.50	0.46

<sup>1</sup> A contingent deferred sales charge of 1.00% applies on certain redemptions made within 18 months following purchases of \$1 million or more made without an initial sales charge. Contingent deferred sales charge is calculated based on the lesser of the offering price and market value of shares being sold.

<sup>2</sup> Restated to reflect current fees.

<sup>3</sup> The fund's transfer agent is currently waiving a portion of the other expenses. This waiver will be in effect through at least January 1, 2025. The transfer agent may elect at its discretion to extend, modify or terminate the waiver at that time.

**Example** This example is intended to help you compare the cost of investing in the fund with the cost of investing in other mutual funds.

The example assumes that you invest \$10,000 in the fund for the time periods indicated and then redeem or hold all of your shares at the end of those periods. The example also assumes that your investment has a 5% return each year and that the fund's operating expenses remain the same. The example reflects the fee waiver described above through the expiration date of such waiver and total annual fund operating expenses thereafter. You may be required to pay brokerage commissions on your purchases and sales of Class F-2, F-3, 529-F-2 or 529-F-3 shares of the fund, which are not reflected in the example. Although your actual costs may be higher or lower, based on these assumptions your costs would be:

Share class:	A	C	T	F-1	F-2	F-3	529-A	529-C	529-E	529-T	529-F-1	529-F-2	529-F-3	R-1
<b>1 year</b>	\$659	\$260	\$332	\$84	\$57	\$47	\$431	\$265	\$111	\$337	\$91	\$60	\$53	\$157
<b>3 years</b>	837	496	505	262	179	148	603	511	347	521	284	189	167	486
<b>5 years</b>	1,029	855	694	455	313	258	789	881	601	720	493	329	291	839
<b>10 years</b>	1,586	1,679	1,238	1,014	701	579	1,328	1,419	1,329	1,296	1,096	738	653	1,834

Share class:	R-2	R-2E	R-3	R-4	R-5E	R-5	R-6	For the share classes listed to the right, you would pay the following if you did not redeem your shares:	Share class:	C	529-C
<b>1 year</b>	\$151	\$127	\$108	\$83	\$62	\$51	\$47		<b>1 year</b>	\$160	\$165
<b>3 years</b>	468	397	348	259	213	160	148		<b>3 years</b>	496	511
<b>5 years</b>	808	686	607	450	376	280	258		<b>5 years</b>	855	881
<b>10 years</b>	1,768	1,511	1,347	1,002	851	628	579		<b>10 years</b>	1,679	1,419

**Portfolio turnover** The fund pays transaction costs, such as commissions, when it buys and sells securities (or "turns over" its portfolio). A higher portfolio turnover rate may indicate higher transaction costs and may result in higher taxes when fund shares are held in a taxable account. These costs, which are not reflected in annual fund operating expenses or in the example, affect the fund's investment results. During the most recent fiscal year, the fund's portfolio turnover rate was 23% of the average value of its portfolio.

**Principal investment strategies** The fund invests primarily in common stocks of issuers around the world that the investment adviser believes have the potential for growth, many of which have the potential to pay dividends. Under normal market conditions, the fund will invest at least 80% of its net assets in equity-type securities. The fund will allocate its assets among various countries, including the United States (but in no fewer than three countries). Under normal market conditions, the fund will invest significantly outside the United States (at least 40% of its net assets - unless market conditions are not deemed favorable by the fund's investment adviser, in which case the fund would invest at least 30% of its net assets). The fund may invest up to 10% of its net assets in emerging markets.

In pursuing the fund's objective, the fund's investment adviser focuses primarily on companies with attributes that are associated with long-term growth and resilience to market declines, such as strong management, participation in a growing market, strong balance sheets, payment of dividends and the potential for above average growth in earnings, revenues, book value, cash flow and/or return on assets.

The investment adviser uses a system of multiple portfolio managers in managing the fund's assets. Under this approach, the portfolio of the fund is divided into segments managed by individual managers.

The fund relies on the professional judgment of its investment adviser to make decisions about the fund's portfolio investments. The basic investment philosophy of the investment adviser is to seek to invest in attractively valued companies that, in its opinion, represent good, long-term investment opportunities. Securities may be sold when the investment adviser believes that they no longer represent relatively attractive investment opportunities.

**Principal risks** This section describes the principal risks associated with investing in the fund. You may lose money by investing in the fund. The likelihood of loss may be greater if you invest for a shorter period of time. Investors in the fund should have a long-term perspective and be able to tolerate potentially sharp declines in value.

*Market conditions* – The prices of, and the income generated by, the securities held by the fund may decline - sometimes rapidly or unpredictably - due to various factors, including events or conditions affecting the general economy or particular industries or companies; overall market changes; local, regional or global political, social or economic instability; governmental, governmental agency or central bank responses to economic conditions; changes in inflation rates; and currency exchange rate, interest rate and commodity price fluctuations.

Economies and financial markets throughout the world are highly interconnected. Economic, financial or political events, trading and tariff arrangements, wars, terrorism, cybersecurity events, natural disasters, public health emergencies (such as the spread of infectious disease), bank failures and other circumstances in one country or region, including actions taken by governmental or quasi-governmental authorities in response to any of the foregoing, could have impacts on global economies or markets. As a result, whether or not the fund invests in securities of issuers located in or with significant exposure to the countries affected, the value and liquidity of the fund's investments may be negatively affected by developments in other countries and regions.

*Issuer risks* – The prices of, and the income generated by, securities held by the fund may decline in response to various factors directly related to the issuers of such securities, including reduced demand for an issuer's goods or services, poor management performance, major litigation, investigations or other controversies related to the issuer, changes in the issuer's financial condition or credit rating, changes in government regulations affecting the issuer or its competitive environment and strategic initiatives such as mergers, acquisitions or dispositions and the market response to any such initiatives. An individual security may also be affected by factors relating to the industry or sector of the issuer or the securities markets as a whole, and conversely an industry or sector or the securities markets may be affected by a change in financial condition or other event affecting a single issuer.

*Investing in growth-oriented stocks* – Growth-oriented common stocks and other equity-type securities (such as preferred stocks, convertible preferred stocks and convertible bonds) may involve larger price swings and greater potential for loss than other types of investments.

*Investing outside the United States* – Securities of issuers domiciled outside the United States or with significant operations or revenues outside the United States, and securities tied economically to countries outside the United States, may lose value because of adverse political, social, economic or market developments (including social instability, regional conflicts, terrorism and war) in the countries or regions in which the issuers are domiciled, operate or generate revenue or to which the securities are tied economically. These securities may also lose value due to changes in foreign currency exchange rates against the U.S. dollar and/or currencies of other countries. Issuers of these securities may be more susceptible to actions of foreign governments, such as nationalization, currency blockage or the imposition of price controls, sanctions, or punitive taxes, each of which could adversely impact the value of these securities. Securities markets in certain countries may be more volatile and/or less liquid than those in the United States.

Investments outside the United States may also be subject to different regulatory, legal, accounting, auditing, financial reporting and recordkeeping requirements, and may be more difficult to value, than those in the United States. In addition, the value of investments outside the United States may be reduced by foreign taxes, including foreign withholding taxes on interest and dividends. Further, there may be increased risks of delayed settlement of securities purchased or sold by the fund, which could impact the liquidity of the fund's portfolio. The risks of investing outside the United States may be heightened in connection with investments in emerging markets.

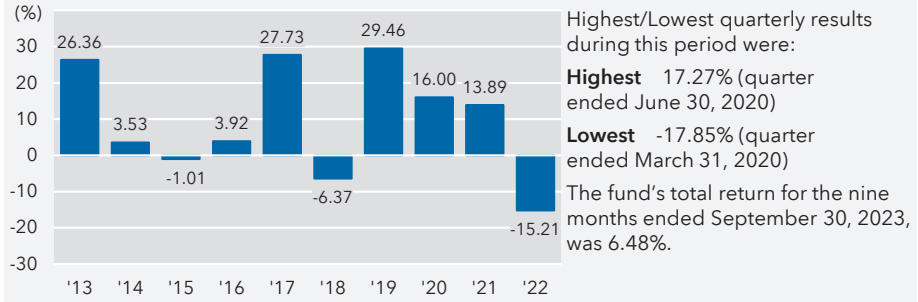
*Management* – The investment adviser to the fund actively manages the fund's investments. Consequently, the fund is subject to the risk that the methods and analyses, including models, tools and data, employed by the investment adviser in this process may be flawed or incorrect and may not produce the desired results. This could cause the fund to lose value or its investment results to lag relevant benchmarks or other funds with similar objectives.

Your investment in the fund is not a bank deposit and is not insured or guaranteed by the Federal Deposit Insurance Corporation or any other governmental agency, entity or person. You should consider how this fund fits into your overall investment program.

**Investment results** The following bar chart shows how the fund's investment results have varied from year to year, and the following table shows how the fund's average annual total returns for various periods compare with a broad measure of securities market results. This information provides some indication of the risks of investing in the fund. Past investment results (before and after taxes) are not predictive of future investment results. Prior to October 30, 2020, certain fees, such as 12b-1 fees, were not charged on Class 529-F-1 shares. If these expenses had been deducted, results would have been lower. Updated information on the fund's investment results can be obtained by visiting [capitalgroup.com](http://capitalgroup.com).

**Calendar year total returns for Class F-3 shares**

(Class F-3 shares are not subject to sales charges.)





**Average annual total returns** For the periods ended December 31, 2022:

<b>Share class</b>	<b>Inception date</b>	<b>1 year</b>	<b>5 years</b>	<b>10 years</b>	<b>Lifetime (4/1/2011)</b>
<b>F-3 – Before taxes</b>	4/1/2011	-15.21%	6.31%	8.85%	7.86%
– After taxes on distributions		-15.50	5.75	8.23	N/A
– After taxes on distributions and sale of fund shares		-8.79	4.91	7.17	N/A

<b>Share classes (before taxes)</b>	<b>Inception date</b>	<b>1 year</b>	<b>Lifetime (4/1/2011)</b>
<b>A (with maximum sales charge)</b>	11/8/2019	-20.38%	2.67%
<b>C</b>	11/8/2019	-16.97	3.93
<b>F-1</b>	11/8/2019	-15.54	4.65
<b>F-2</b>	11/8/2019	-15.30	4.92
<b>529-A (with maximum sales charge)</b>	11/8/2019	-18.49	3.46
<b>529-C</b>	11/8/2019	-17.01	3.90
<b>529-E</b>	11/8/2019	-15.69	4.47
<b>529-F-1</b>	11/8/2019	-15.34	4.85
<b>529-F-2</b>	10/30/2020	-15.32	5.54
<b>529-F-3</b>	10/30/2020	-15.28	5.63
<b>R-1</b>	11/8/2019	-15.92	4.53
<b>R-2</b>	11/8/2019	-16.06	4.20
<b>R-2E</b>	11/8/2019	-15.79	4.58
<b>R-3</b>	11/8/2019	-15.79	4.47
<b>R-4</b>	11/8/2019	-15.52	4.77
<b>R-5E</b>	11/8/2019	-15.36	4.92
<b>R-5</b>	11/8/2019	-15.25	4.98
<b>R-6</b>	11/8/2019	-15.22	5.01

<b>Indexes</b>	<b>1 year</b>	<b>5 years</b>	<b>10 years</b>	<b>Lifetime (4/1/2011)</b>
MSCI World Index (reflects no deductions for account fees, expenses or U.S. federal income taxes)	-18.14%	6.14%	8.85%	7.84%

The fund was organized for the purpose of effecting the reorganization of Capital Group Global Equity Fund (the “predecessor fund”) into a new Delaware statutory trust. The fund acquired the assets and assumed the liabilities of the predecessor fund on November 8, 2019, and the predecessor fund is the accounting and performance survivor of the reorganization. This means that the predecessor fund’s performance and financial history have been adopted by the fund and will be used going forward from the date of reorganization. Except where the context indicates otherwise, all references herein to the “fund” include the predecessor fund prior to November 8, 2019. In connection with the reorganization, former shareholders of the predecessor fund received Class F-3 shares of the fund. The performance of Class F-3 shares of the fund includes the performance of the predecessor fund prior to the reorganization. Class F-3 shares of the fund have the same expenses as shares of the predecessor fund. The inception date shown in the table for Class F-3 shares is that of the predecessor fund.

After-tax returns are shown only for Class F-3 shares; after-tax returns for other share classes will vary. After-tax returns are calculated using the highest individual federal income tax rates in effect during each year of the periods shown and do not reflect the impact of state and local taxes. Your actual after-tax returns depend on your individual tax situation and likely will differ from the results shown above. In addition, after-tax returns are not relevant if you hold your fund shares through a tax-favored arrangement, such as a 401(k) plan, individual retirement account (IRA) or 529 college savings plan.

## Management

**Investment adviser** Capital Research and Management Company

**Portfolio managers** The individuals primarily responsible for the portfolio management of the fund are:

<b>Portfolio manager/ Fund title (if applicable)</b>	<b>Portfolio manager experience in this fund</b>	<b>Primary title with investment adviser</b>
<b>Eu-Gene Cheah</b> Senior Vice President	1 year	Partner – Capital International Investors
<b>Gerald Du Manoir</b> Senior Vice President	13 years	Partner – Capital International Investors
<b>William L. Robbins</b> President	10 years	Partner – Capital International Investors
<b>Steven T. Watson</b> Senior Vice President	7 years	Partner – Capital International Investors
<b>Philip Winston</b> Senior Vice President	10 years	Partner – Capital International Investors

**Purchase and sale of fund shares** The minimum amount to establish an account for all share classes is normally \$250 and the minimum to add to an account is \$50. For a payroll deduction retirement plan account, payroll deduction savings plan account or employer-sponsored 529 account, the minimum is \$25 to establish or add to an account. For accounts with Class F-3 shares held and serviced by the fund's transfer agent, the minimum investment amount is \$1 million.

If you are a retail investor, you may sell (redeem) shares on any business day through your dealer or financial professional or by writing to American Funds Service Company® at P.O. Box 6007, Indianapolis, Indiana 46206-6007; telephoning American Funds Service Company at (800) 421-4225; faxing American Funds Service Company at (888) 421-4351; or accessing our website at capitalgroup.com. Please contact your plan administrator or recordkeeper to sell (redeem) shares from your retirement plan.

**Tax information** Dividends and capital gain distributions you receive from the fund are subject to federal income taxes and may also be subject to state and local taxes, unless you are tax-exempt or your account is tax-favored.

**Payments to broker-dealers and other financial intermediaries** If you purchase shares of the fund through a broker-dealer or other financial intermediary (such as a bank), the fund and the fund's distributor or its affiliates may pay the intermediary for the sale of fund shares and related services. These payments may create a conflict of interest by influencing the broker-dealer or other intermediary and your individual financial professional to recommend the fund over another investment. Ask your individual financial professional or visit your financial intermediary's website for more information.



## Notes



You can access the fund's [statutory prospectus](#) or [SAI](#) at [capitalgroup.com/prospectus](https://capitalgroup.com/prospectus).

---

MFGIIPX-122-0124M  
Litho in USA CGD/PL/10571  
Investment Company File No. 811-23468